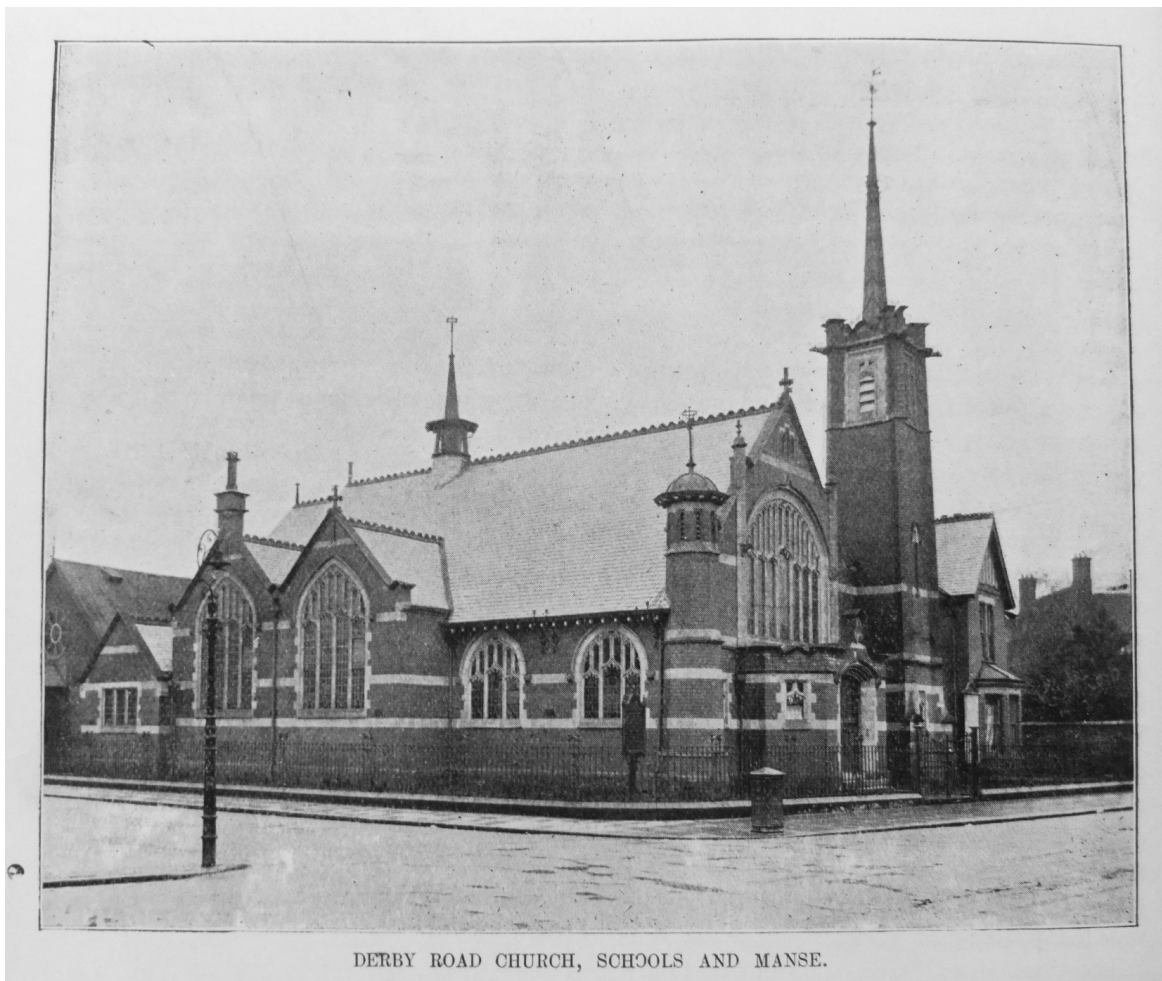
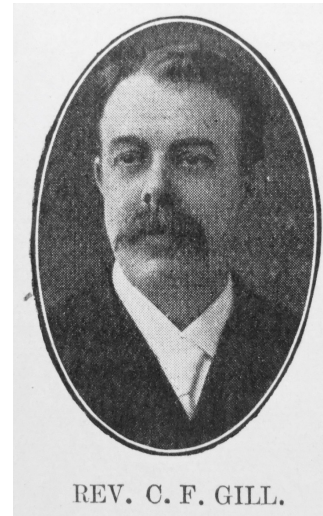


## Long Eaton, Derby Road

**Transcription of Article published in the Primitive Methodist Magazine In the series 'Our New Churches' by  
Rev. C.F. Gill**

THE story of Primitive Methodism in Long Eaton contains a record of courageous and continuous service which has made possible remarkable success. Sixty-two years ago the work commenced by the open-air preaching of William Clay, and its line of progress has been from Market Place to rented shop and in 1851 to a small chapel, until to-day our Church has property in the town worth £9,045.

The new church at Derby Road erected in 1905-6 at a cost of £4,745 takes a prominent place among the successes achieved by Primitive Methodism in the town. The purchase of the site dates back to the year 1885 when the growth of the district suggested to the officials of Bourne Church the advisability of securing land for future extension. The years which followed were marked by a less rapid growth of the neighbourhood, and therefore with less prospect of successful extension. This led to a tactical error when in 1893 a minister's house was erected upon the rear portion of the site. During the ministry of the Rev. E. Hancox, however an iron building was erected and a Society formed.



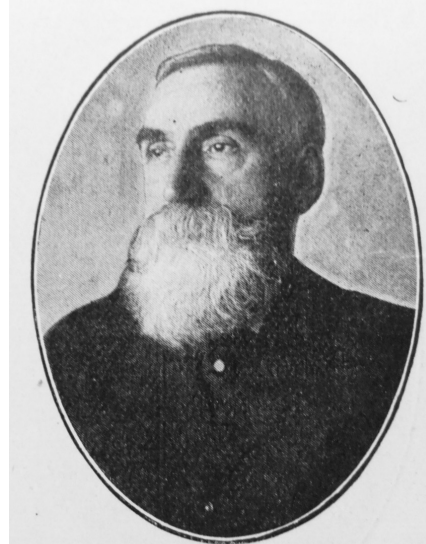
The years 1900 to 1908 have been years of remarkable material progress in the town, and the extension of Primitive Methodism has been made possible because those who have been successful in business have remained loyal to the church of their choice. One of the memories associated time had come when we should initiate a forward movement for the erection of a new church. At last the writer put the plain question: What are you prepared to give? and received a ready reply containing a promise of £500 which was increased to £1,000 before the completion of the scheme. A Trustees' meeting was called at which Mr. Crowe repeated his promise. This was followed by a season of quiet thought on the part of those present, someone remarking that it was a silence one could feel. Additional promises, however, were soon made, and Mr. W. Johnson, Trust Secretary, was able to record that £910 had been promised in that meeting. A three year~ system for the payment of the promises was initiated, and it is to the credit of all concerned and to the business-like working of Mr. W. Johnson, who undertook the entire work associated therewith, that no less a sum than £1,323 was in this way secured.

The initial steps in the carrying-out of the scheme were associated with great difficulties. The minister's house occupied the site that should have been reserved for the school building. A vacant site of land adjoining, and separating our site from the vicarage had been previously owned by the Ecclesiastical Commissioners, and contained in the deed a covenant which forbade the erection of anything upon the land except private houses. The trustees in conjunction with the Circuit authorities decided to purchase this land, to remove the minister's house, and re-erect it upon the front portion.

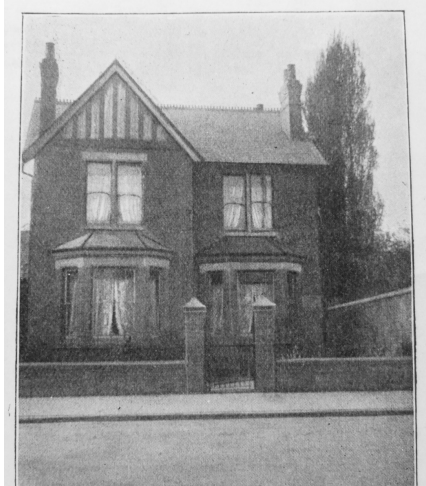
A deed of release was secured from the Ecclesiastical Commissioners which enabled the trustees to erect one-storied class rooms on the rear portion of the land. The minister's house having been removed, the iron building was placed on the school site to serve as a temporary school and permanent vestries, viz., four class rooms, infants' room, kitchen, etc., were erected. Plans were considered for the church and ultimately those submitted by Messrs. G. Baines and Sons, F.R.I.B.A., of London were accepted, involving an expenditure of £3,000. Notwithstanding the promises made this expenditure, and the cost of removing the iron building, the erection of vestries, with an old debt of £334 was a great undertaking for a society of sixty members. The promise, therefore, made by the Church Extension Fund to pay the interest on £500 for ten years was at the moment a great inspiration.



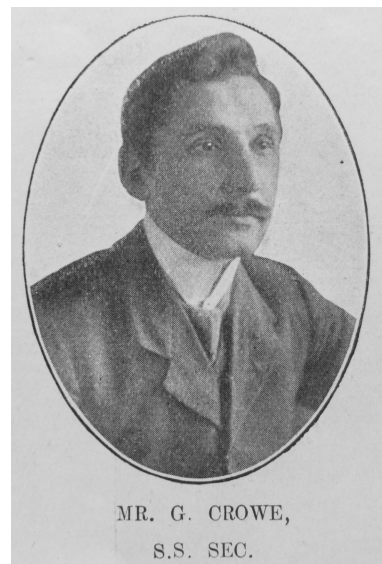
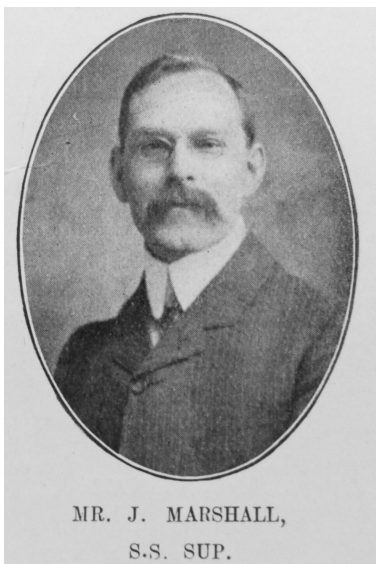
MR. W. JOHNSON.  
SOCIETY STEWARD.



MR. ANDREW CROWE,  
CIRCUIT STEWARD.



BOURNE HOUSE, LONG EATON.

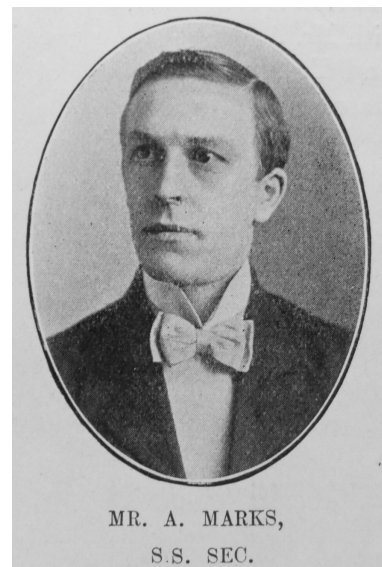


The Stonelaying Services were held June 6th, 1905. An address was given by the Rev. J. Pickett. The evening meeting was presided over by Alderman Hilton, and addressed by Rev. J. Pickett and Mr. M. Bourne. The amount realised by stone-laying, £1,125; by donations, collections, tea, etc., £217 8s. 11d., making a grand total of £1,342 8s. 11d. On Thursday, March 22nd, 1906, the opening services took place. The door was opened by Mr. A. Crowe, the dedicatory sermon being preached by the Rev. H.J. Pickett of Northampton. The evening meeting was presided over by the Right Hon. Sir Walter Foster, M.P. and addresses were given by H.R. Mansfield Esq., M.P., and the Rev. H.J. Pickett. The income for the day amounted to £401 13s. 7d.

On Tuesday, April 17th, 1906, the new organ, built by Mr. A. Keates, of Sheffield, was opened, costing £424.

This splendid addition was made possible by the gift of £200 from Andrew Carnegie, Esq., and the offer of Mr. A. Crowe to pay the remaining portion of the cost.

The church, which stands in a commanding position fronting the Derby Road, is in design a late Gothic; a bold square tower is erected on one corner of the front, terminated by a quaint spirelet. The windows of the church are handsomely traceried, and all filled with richly coloured lead lights. The seating is of Orham wood, stained green, and on a circular plan, every hearer thus facing the preacher. The pulpit, communion and organ are of oak richly panelled and traceried.



The church will seat about 450, and the total cost of scheme has been £4,745, of which £3,221 has been raised, leaving a debt of £1,524.

The success tabulated is due to the splendid enthusiasm and willing sacrifice of all our people, but special mention must be made of the splendid work accomplished by Mr. A. Crowe, the treasurer, and of Mr. W. Johnson, the secretary, through whose efforts many gifts were secured from friends in the town and neighbourhood. The prospects for the future are most encouraging. The church is situated in a populous neighbourhood. The school numbers twenty-six teachers and 280 scholars, and has in connection therewith a very successful Bible class. With Messrs. H. Witham and J. Marshall as superintendents, and Messrs. G. Crowe and A. Marks as secretaries, and a splendid staff of willing workers the school has before it the possibility of great usefulness.

The note which has sounded through all the working out of the scheme has been “the glory of God and the redemption of the people.” “And of Zion it shall be said, This and that man was born in her, and the highest Himself shall establish her. The Lord shall count when he writeth up the people that this man was born there.”

---

**References**

*Primitive Methodist Magazine* 1908/610