

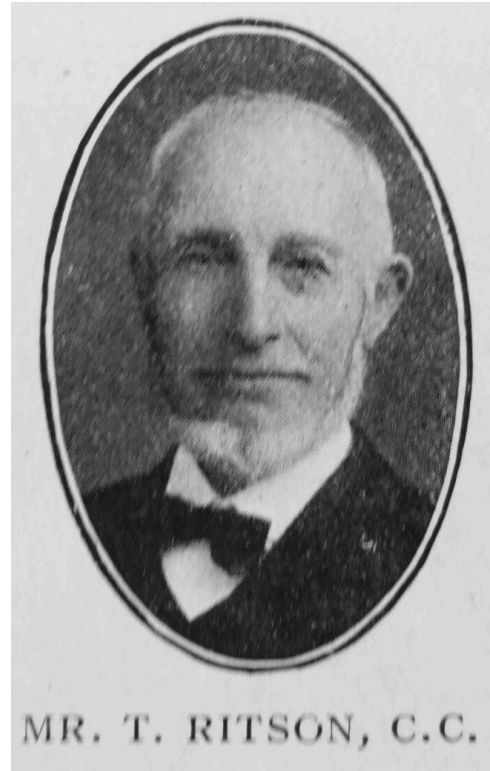
Thomas Ritson, C.C.

Transcription of obituary published in the Primitive Methodist Magazine by T.P.E.

The death of Thomas Ritson on December 8th, 1911, caused widespread regret throughout the Haltwhistle Circuit and surrounding district. Three days before his death he was present at the Henshaw Chapel, which he loved so much and served so well. Though in his seventy-ninth year, he was still vigorous and active, and was rarely absent from any services in the chapel. The end came with startling suddenness. He had written several letters during the afternoon, and whilst his wife took these to the adjoining farmhouse to be posted—being absent but a few minutes—he passed peacefully away in his chair. His departure was much as he would have wished it. God touched him and he slept. As we think of him we are filled with gratitude for his splendid life.

Born in Allendale, not many miles from where he finished his earthly course, he has given ungrudgingly of his service and substance to our Church. For fifty-five years he was a local preacher; twenty-five years he served as Circuit Steward in the Allendale Circuit. Coming to Bardon Mill over twenty-five years ago he rendered great service to our Henshaw Church as Trust Treasurer and Class Leader. His home was always open to Primitive Methodists and his hospitality was lavish. A man of deep conviction and intense piety, he was a mighty force for righteousness in the district.

The name of Thomas Ritson was the synonym for purity and integrity in public life, and for many years he represented his district in the County Council. The funeral on December 12th was conducted by the Vicar of the parish and Rev. T. Pearson Ellis. Our sympathy is with the family.



References

Primitive Methodist Magazine 1912/244