

Bournheath Primitive Methodist Chapel, 1837

Fairfield Road, Bournheath, Bromsgrove, Worcs B61 9JN

renamed **Bournheath Methodist Church.**

Compiled by Trevor Bott.

Location GR – SO39504 27382



Church - 1998

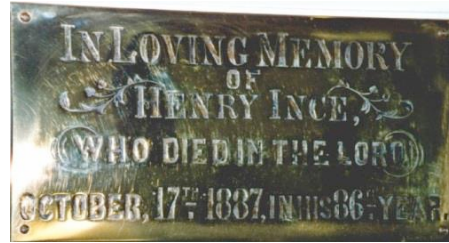
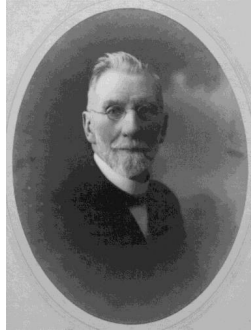


The Primitive Methodist Chapel was opened in July 1837 and cost £120. There were “150 sittings – all free”.

The church sadly closed in September 2015 after 178 years of continuous Methodist worship in Bournheath village.

- **1826** - William Ince, brother of Henry Ince, “erected a small chapel.....this was the first place set apart for the worship of God in the outlying districts of the parish of Bromsgrove and its vicinity”
[PMM 1861]
- **1836** - “It became necessary to provide a larger chapel and brother Ince (William) sold the society the plot of ground on which the sanctuary at Bournheath now stands” [PMM 1861]
- **July 16th 1837** - “We have had a society in this place for some years; but its progress has been retarded for want of a more convenient place of worship. We have at length erected a neat little chapel, twenty six by eighteen feet outside, seventeen feet high, with a gallery one end. It was opened **July 16th 1837**, when Mr. H. Bourne preached morning and night, and the Rev. Mr. Ashwell (Independent) of Bromsgrove, in the afternoon. The congregations were large, numbers could not get in. the collections were liberal, and services powerful”
[PMM 1838]
- **1851** - “The chapel cost £120, and had 150 sittings – all free. On March 30th - Afternoon: Congregation 100, Sunday Scholars 60. Evening: Congregation 200. Average Morning 100, Sunday Scholars 60. Signed **Henry Ince**, Local preacher, Bournheath.”[1851 Religious Census]
- **1857** - “Anniversary services were celebrated on Sunday and Monday November 29th and 30th. On the Sabbath three sermons were preached – those in the morning and evening by Mr. C. Bayless of Coventry; in the afternoon by Mr. G. Darby, of Dayhouse Bank. On Monday afternoon, a tea meeting held in the chapel when upwards of 100 persons enjoyed the social repast. After tea a public meeting was held, when addresses were delivered by Messrs. H. Ince, J. Lawrence, J. Whitmore, C. Hunt and the Rev. T. Hill. On both days much Divine influence was felt.....our society at this place is in a prosperous state; the congregations good. ‘The Lord of hosts is with us, the God of Jacob is our refuge’ ” JABEL INCE
[PMM 1858]

One of the founder trustees of the Primitive Methodist chapel in 1837 was **Henry Ince (1801 – 1887)** whose photograph, and a plaque commemorating his death, are shown below:



Henry Ince (1801-1887) and a plaque to him in the church.

Henry Ince, as well as being a nailmaker in the little nailshop next to his house opposite the chapel, worked tirelessly for the nailmakers cause; he became an ardent campaigner for the rights of the nailmakers of Bromsgrove District and held many meetings with the nailmakers and nailmasters in an attempt to improve the pay and working conditions. He chaired many meetings in Bromsgrove and started and ended each meeting (with well over a hundred nailmakers attending) with a hymn and a prayer. Henry was held in such high regard that at one meeting in 1869 he was presented with a “frock coat, waistcoat and trousers, a silk hat, stockings, garters and a walking stick.....After the presentation Mr. Ince retired and later reappeared, attired from head to foot in his new suit. He met a most enthusiastic response” [source - Bromsgrove Messenger 1869].

In 1834 Henry Ince was accepted as a travelling preacher in the Birmingham Methodist Circuit and in his local preaching duties as far away as Stratford and Leamington he was paid 9/6d (48p) per week and walked 14,000 miles to and from these preaching appointments. Henry died “in the Lord” on October 17th 1887 aged 86 and a plaque was erected to his memory in the church. He was buried in Bromsgrove cemetery with his second wife Ann who had also been a local Methodist preacher.

[TJB.2024] [revised 2025]

©Photo and plaque detail by kind permission of Bournheath Methodist Church.

PMM – Primitive Methodist Magazine.

Bromsgrove Messenger – www.findmypast.co.uk (newspapers).