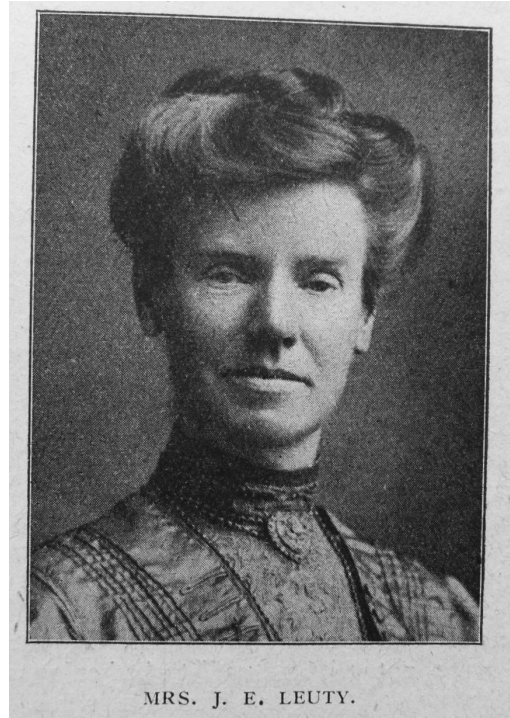


Mary Leuty (nee Bulmer)

Transcription of article published in the *Primitive Methodist Magazine* by Rev. George Bennett

MRS. J.E. LEUTY, Secretary of the Women's Missionary Federation, is retiring from her official duties at the forthcoming Conference. This event is of more than ordinary importance, inasmuch as the Federation and the whole denomination owe to her an immense debt. Her service to what is now one of the most prosperous organisations of the Church has been invaluable. When the Federation was in its formative process, she brooded over the elements until they took shape; she has been the inspiring genius and leader through the ten years of its existence; and to her more than to anyone the Church owes the missionary outlook now so radiant among the women of our Churches. She retires from her arduous labours amid the universal esteem of the auxiliaries and the womanhood of the denomination. As it is greater to beget a noble race than to spring therefrom, so is it a prouder distinction to found a movement which leads on to far-reaching and gracious issues, than to carry on the work when it has been started. Mrs. Leuty's record is that of a pioneer in missionary organisation.



There had, however, been a forerunner, and the service rendered by Miss Perrett will never be forgotten. The work this gracious lady did was a shadow of good things to come. The good things came with Mrs. Leuty's accession. For she was a woman of vision. She saw that the set time had arrived; the atmosphere had been created; the raw materials were lying loosely scattered. To-day the Church is blessed with a federation of women missionary workers, enthusiasts — multitudes, of them! such as would enrich and adorn any denomination.

The Federation was founded in 1909 at the Southport Conference. It was piloted through the sessions of that assembly by the Missionary Secretary (the Rev. A.T. Guttery), and blessed by the words of the President (Sir W.P. Hartley). At the close of its first year it reported fifty-six auxiliaries, two thousand two hundred and eighty-nine members, and an income of eight hundred and twenty-three pounds. From its inception it has attracted the most ardent spirits in the Church. Its presidents have all been chosen from among those ladies who had attained eminence in other fields of service. But with the years' growth there came, increased toil for the organising and directing genius of the secretary. Each year the journeys alone have averaged four thousand miles. She retires from her task with one hundred and eighty-three branches, ten thousand four hundred and fifty-nine members, and with over four thousand pounds income for the year, an increase of nine hundred and seventy-two pounds. She has formulated a great programme for the celebration of the Missionary Jubilee, and has resigned her task to the capable hands of Mrs. E. H. Brown, of Sunderland.

References

Primitive Methodist Magazine 1919/493